



High Wycombe Town Committee agenda supplement

Date: Tuesday 4 October 2022

Time: 7.00 pm

Venue: High Wycombe Council Chamber, Queen Victoria Road, High Wycombe,
HP11 1BB

Membership:

A Alam, M Angell, M Ayub, S Barrett, K Bates, A Baughan, L Clarke OBE, T Green (Vice-Chairman), S Guy, D Hayday, O Hayday, A Hussain, I Hussain, M Hussain, M Hussain, M Hussain JP, M Knight, S Raja (Chairman), N Rana, M Smith, N Thomas, P Turner, J Wassell and K Wood

Agenda Item	Page No
4 PRESENTATION WWFC DISABLED SUPPORTERS ASSOCIATION (Peter Lerner)	3 - 18
5 PRESENTATION ALL SAINTS CHURCHYARD (Rev Gareth Morley)	19 - 34
6 PRESENTATION APPROACH TO THE PARKING REVIEW (Julie Rushton)	35 - 44

If you would like to attend a meeting, but need extra help to do so, for example because of a disability, please contact us as early as possible, so that we can try to put the right support in place.

For further information please contact: Iram Malik on 01494 421204, email democracy@buckinghamshire.gov.uk.

This page is intentionally left blank

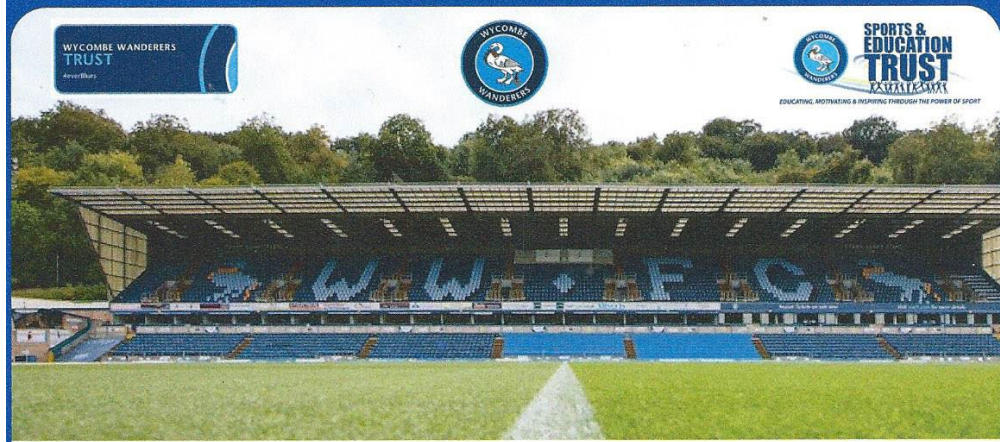


Wycombe Wanderers Disabled Supporters Association



TM





'ALL QUARTERS'

A COLLABORATIVE CONSULTATION PROJECT SEEKING TO ENGAGE LOCAL PEOPLE FROM UNDER-REPRESENTED GROUPS TO IMPROVE THE MATCH DAY EXPERIENCE AT ADAMS PARK FOR EXISTING & NEW SUPPORTERS

DISABILITIES

WOMEN & GIRLS

LGBTQIA+

MINORITY ETHNICITIES



Kindly funded by the Premier League Fans Fund



WYCOMBE WANDERERS DISABLED SUPPORTERS ASSOCIATION

OBJECTIVE – to welcome supporters and potential supporters of Wycombe Wanderers, and all visitors to Adams Park, High Wycombe, and to ensure that all is done that can possibly be done to make each visit stress-free, comfortable and enjoyable.

Wheelchair user

Ambulant disability

Hearing disability

Sight disability

Learning disability

Neurodivergent

Neurological / brain condition

Mental health condition

Nerve or pain-related

Motor skills / speech related

Fatigue / low immunity

Other non-visible disability

Caution
This door is alarmed

Michael's... Full Chapter Come on you there!	Thomas Alexander Mounting 201 Line	Memories & Love With In Change Kempster's Love & C.
Book Every Line Down A Man of Letters Through his letters	This is a book	My & 1970's Monthly With Anniversary and more than
My heart's full When the book from in back to CD's	Business Guide Hoping 20th birthday like a star	Great "Pop" Hall Favorite a Member Up for more!

100% Satisfaction Guaranteed No Hidden Fees	24/7 Customer Support Available Online	Free Shipping On All Orders	Quality Products At Wholesale Prices	Fast Delivery Within 2-3 Business Days	Secure Payment Options Available
Free Returns Policy	Lowest Prices Guaranteed	Expert Advice From Our Team	Wide Variety of Products	Member Rewards Program	Reliable Shipping











Picture your day
with picturepath

- Breakfast
- Brush teeth
- Walk to school
- Spelling
- Computers



White sign with green accents on the brick wall.

PUSH

Fund-raising - £10k plus.....

Grants

Philanthropists

Donations

Charities

Local Authority

GoFundMe



**Thank you for
listening!**

dsa@wwfc.com

This page is intentionally left blank

Remember

Refresh

Renew

All Saints Churchyard

The churchyard was opened in around **1087**
(The same year William the Conqueror died)

It closed to new burials in **1854**

In 1972 maintenance of the churchyard was passed to the Council under Section 215 of the Local Government Act

The ownership and management of the churchyard remains with the Church.

This is the final resting place of individuals such as;

George Brown who was a road surveyor,

Henry Lane who was a coachmaker,

Jane Britten who was a midwife,

Daniel Pearce who was a Master Miller at Pans Mill and

John Griffin (Aged 5).

**At least 67 Infants
are buried in the churchyard**

**At least 147 children (under 18's)
are buried in the churchyard**

**At least 1179 people are known to have been buried in
the churchyard (infants, children and adults)**

**Although this will be a lot more
as records only go back to the end of the 17th Century.**



All Saints Churchyard

What needs addressing

What people



History

Environment

(Trees, grass, etc)

ASB

(Parking, Drugs, Alcohol, litter)

Environment

(Lack of Seating, rats/vermin, maintenance)

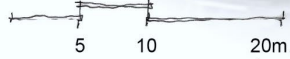
Safety Risks /
Restrict access



This project seeks to

Remember, *Refresh* and

Renew the churchyard.





All Saints Churchyard

Renew

Page 28



10%
of respondents in the survey told us
to do this without it being prompted

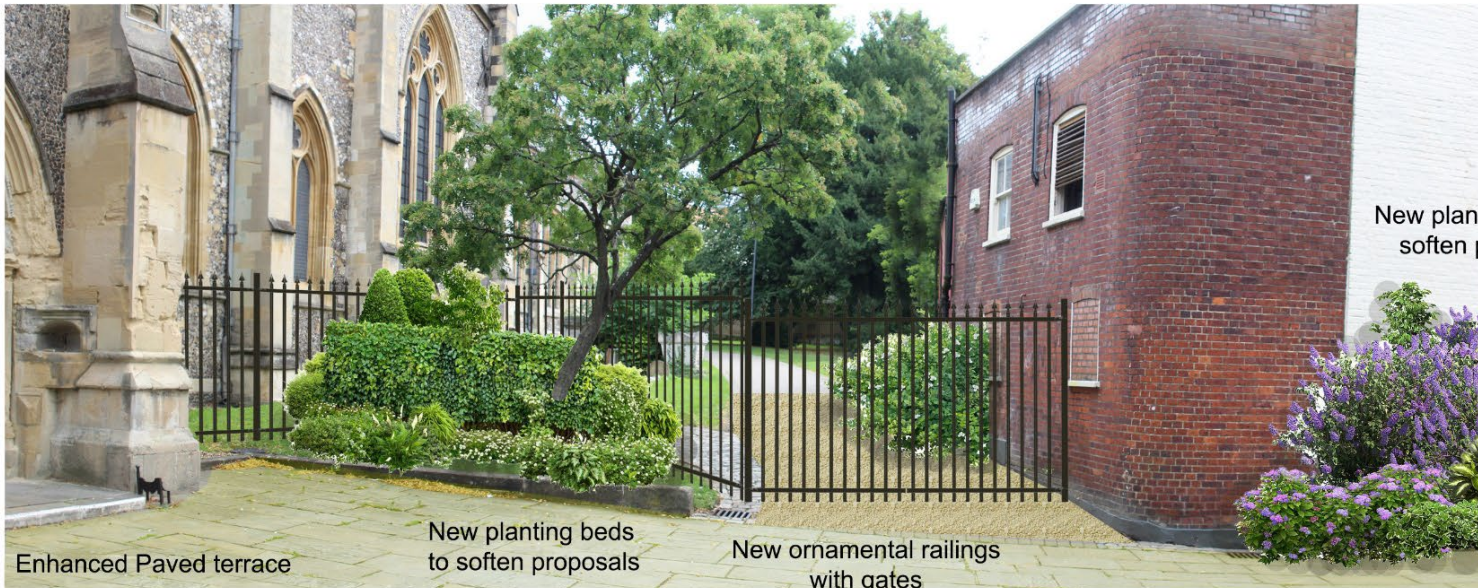




Clews Landscape Architecture Ltd, 57 Hightown Road, Banbury, OX16 9BE
 t. 01295702624 w. www.clewsla.co.uk

**Eastern pathway proposals
 21_232_D04**

Existing view: Large urban path with bins and column lighting dominating view



New planting beds to soften proposals

Enhanced Paved terrace

New planting beds to soften proposals

New ornamental railings with gates

Proposed view: New greened space with fence separating off the south terrace from the Church Gardens



Existing view: Wall creating barrier with poor visual connection through space to south gates



Proposed view: New stepped access with paved space for seating/ events



Clews Landscape Architecture Ltd, 57 Hightown Road, Banbury, OX16 9BE
t: 01295702624 w: www.clewsla.co.uk

**South Door Piazza
21_232_D05**

Total Project Cost

approx. £263,520

All Saints Churchyard

Next Steps...

Work on securing 10% of funding.

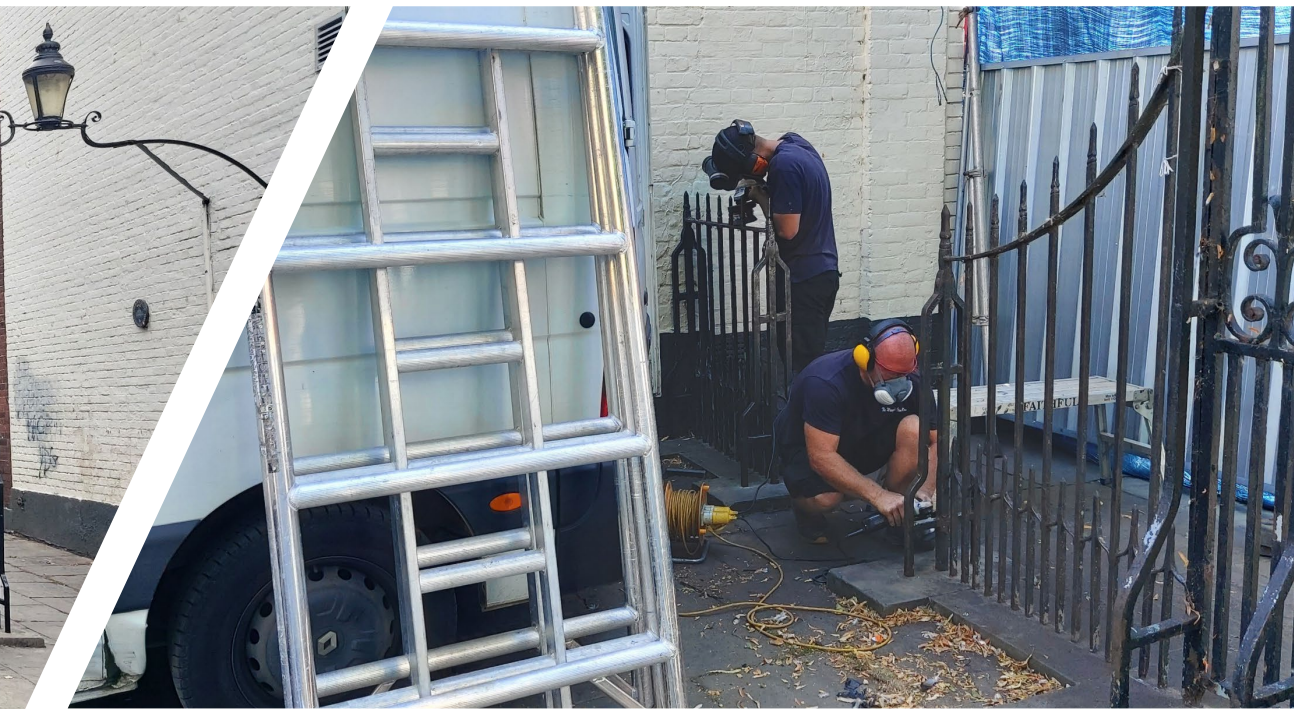
- We have already secured/spent £4,200 as a church
 - £2,700 spent on landscape architect
 - £1,500 available now
- You have spent £3-5,000 (?) on repair of churchyard gates
- Therefore we need to find approximately £20,000 further to obtain the 10%
- Community Board may be able to provide some money to support this project

Wildlife, Plant and Tree Survey

Survey of those using Public Right of Way, PSPO gating order

Apply for grants

- Various grant bodies will give towards the project (once 10% can be secured for the project)



Remember

Refresh

Renew

All Saints Churchyard



High Wycombe Parking and CPZ review

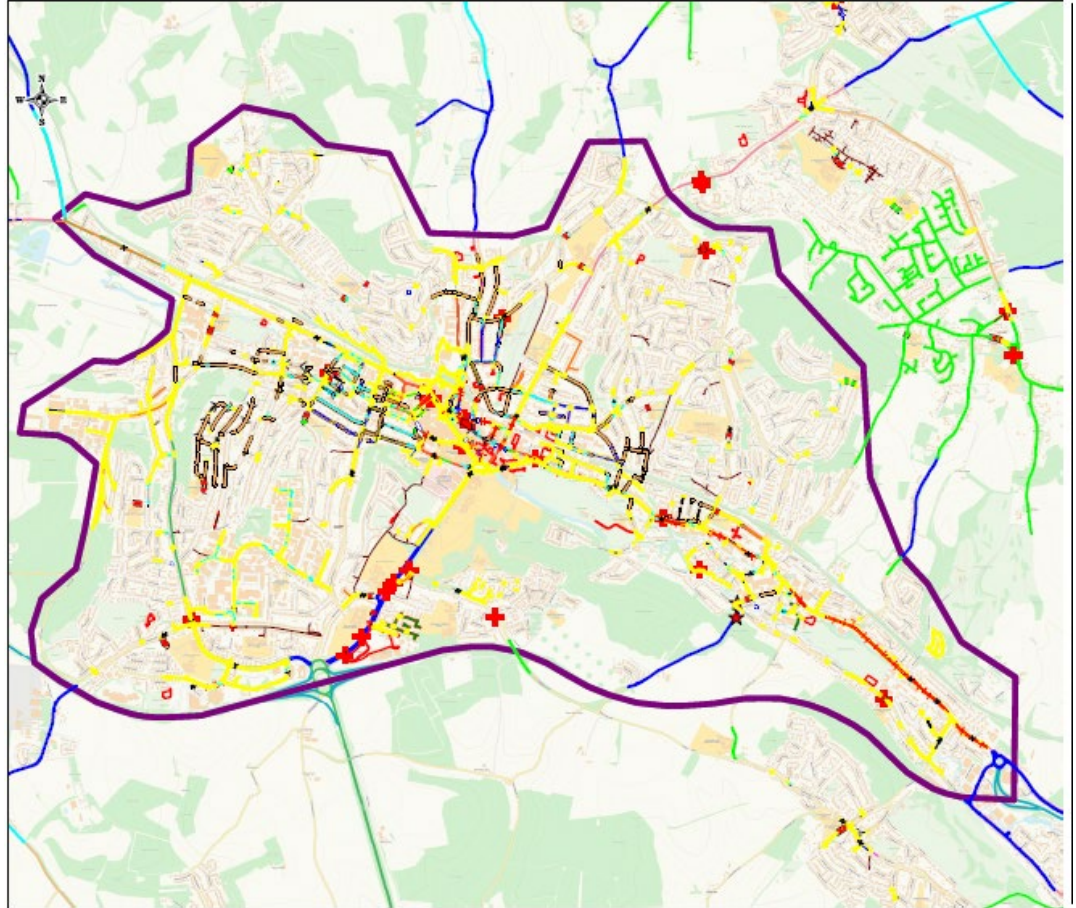
Initial Project Meeting



Background

- The Council's parking team and Councillors have received numerous complaints from residents and businesses in the High Wycombe area who have advised of difficulty with parking in their roads and areas.
- These areas vary from roads within existing Controlled Parking Zones (CPZs) and roads outside of CPZs.
- In order to alleviate displacement of these parking issues, a decision was taken to undertake a town wide review.
- To ensure the needs of the various wards are included the aim is to set up a project board to discuss the full scope of scheme.

Study Area



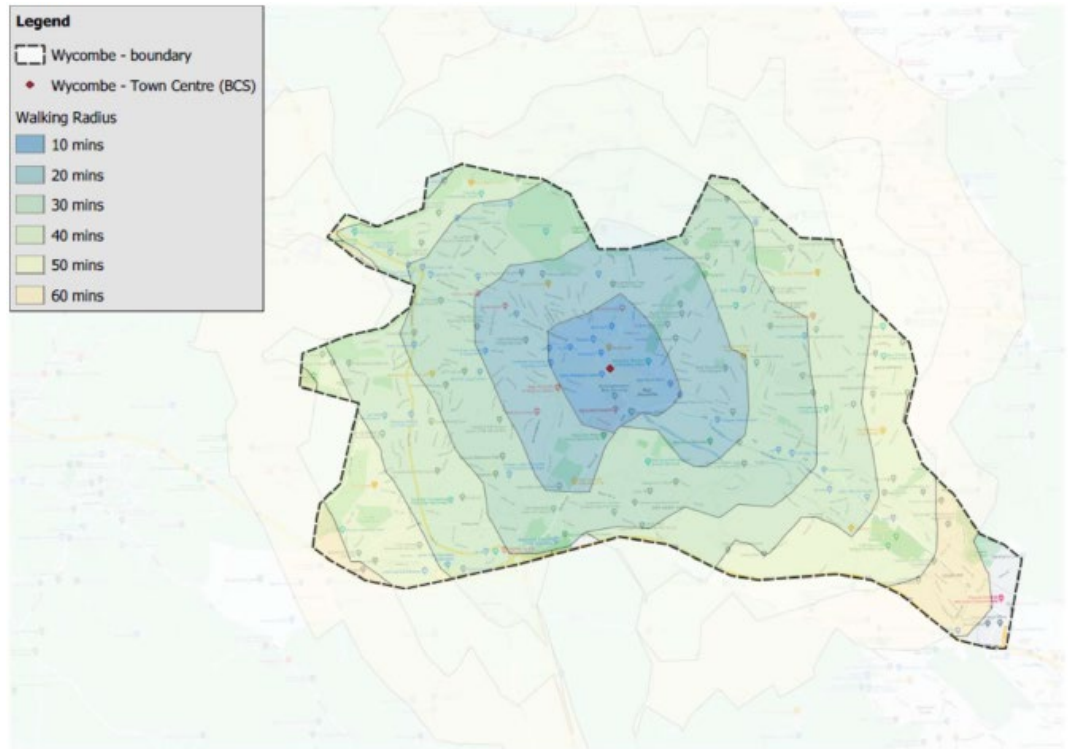
Methodology

- Inception meeting will be held with the project board to ensure the requirements of the brief are fully understood and any requirements are captured.
- Risks will be identified and eliminated where possible or mitigated.
- Other priorities will be considered as part of the process which include:
 - Air quality
 - Commuter parking issues
 - Event parking (Adams Park Stadium)
 - Funding
 - Emerging Local Transport Plan 5 and wider Parking policy reviews

Methodology

- Set out proposed boundaries which will contain the areas / roads which will be reviewed or assessed as part each stage of the programme.
 - These boundaries will be based on proximity to the town centre area and potential displacement locations.
- Agree priorities within areas.
- Set out project deliverables:
 - A project programme including timescales.
 - Proposed boundaries for areas to be reviewed at various stages of the programme.
 - Equalities impact assessment for the proposed areas.

Example Walking Radius from Town Centre



Methodology

- Undertake a parking stress survey
 - This will take into account Highway Code rules on where vehicles should not stop or park.
 - Detail out the number of hypothetical parking spaces are available.
 - Be undertaken at various times and days during the week.
 - Areas around Adams Park will have additional visits to clarify usage on event days.
- Review existing signage for compliance within existing CPZs.

Programme

- **Contractors draft programme outline has been provided below.**

Page 42

	Month 1	Month 2	Month 3	Month 4	Month 5	Month 6
Project Commissioned						
Inception meeting						
Programme outline and create proposed boundaries						
Equality Impact Assessment						
Stress surveys						
Analysis						
Submit Parking demand report						
Designs (including sign and line schedules and estimate of qualities) for first phase						

Once the final options for consideration are agreed by the project board, progression to implementation is via the Council's decision making process, alongside the legislative requirements to amend the Traffic Regulation Order; this includes statutory consultation

Thank You

This page is intentionally left blank